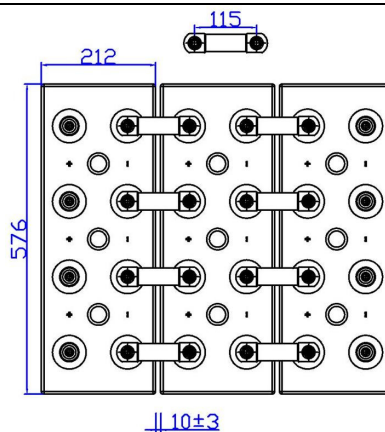
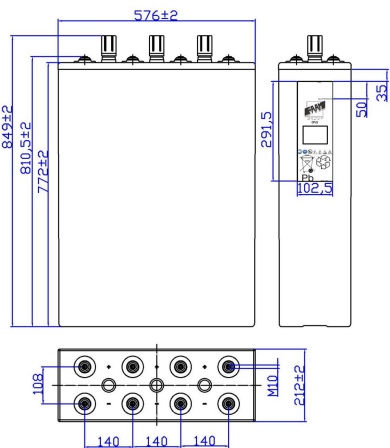




24STA125 – 24OPzS3000

DIMENSIONAL FEATURES

Nominal Voltage	2V		Stationary Cell flooded (OPzS) Box material: SAN transparent Lid material: ABS grey color Positive tubular and Negative flat plates Separators with low electric resistance Copper Connection (Cu) section: 3x30mm Standards: CEI EN 60896 Part 11 EN 50272-2
Nominal Capacity (10 hours)	3000Ah (1,80Vfin) a 20°C		
Dimensions	Lenght	212 ±2mm	
	Width	576 ±2mm	
	Box Height	772 ±2mm	
	Total Height	849 ±2mm	
Technical Drawing	n°4 00408-0	Weight	225 Kg ± 5%
Screw Terminals: M10 female Material: brass with protective treatment			



ELECTRIC FEATURES

Characteristics		Charging curves @ 20°C (77 °F)	
Capacity	10 hours (1,80Vfin) 8 hours (1,75Vfin) 3 hours (1,70Vfin) 1 hour (1,65Vfin)	3000,0 Ah 2952,9 Ah 2346,3 Ah 1509,6 Ah	
Temperature influence on the capacity (10h)	40°C 20°C 0°C	102% 100% 85%	
Internal Resistance Ri: 0,11 mΩ ±10%		SCC I _{sc} : 18600 A ±10%	
Charging Voltage	Standby use	Max charging current 600A Floating Voltage 2,23V at 20°C Boosting Voltage 2,40V at 20°C Temperature Coefficient -20 mV/°C	

Discharge Table at constant Current (Amp) and constant Power (Watt/cell) at 20°C

Time		30min	60min	90min	2hours	3hours	5hours	8hours	10hours	100hours	120hours
1.65V	A	1887,90	1509,60	1276,02	1081,20	818,40	582,71	395,19	324,00	40,76	34,58
	W	4367,68	2891,70	2216,16	1872,00	1404,81	978,80	699,16	567,00	73,58	62,42
1.70V	A	1675,97	1356,60	1175,04	1011,84	782,10	561,62	386,68	321,00	41,15	34,91
	W	4164,53	2794,50	2138,40	1808,49	1365,22	974,19	695,87	563,54	73,29	62,18
1.80V	A	1218,00	1020,00	918,00	816,00	660,00	490,50	354,75	300,00	39,57	33,57
	W	3385,80	2430,00	1944,00	1671,43	1277,10	923,40	657,72	540,00	71,23	60,43