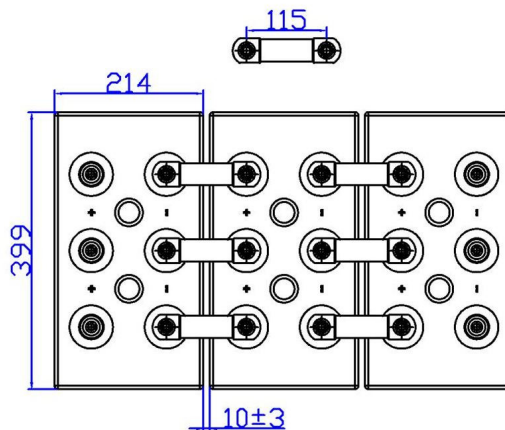
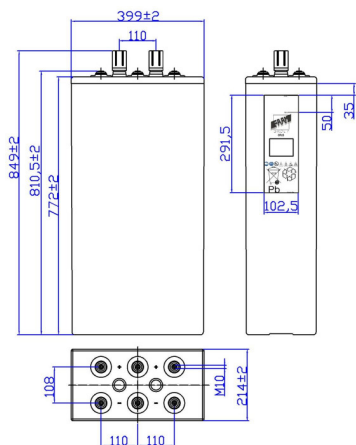




16STA125 – 16OPzS2000

DIMENSIONAL FEATURES

Nominal Voltage		2V		Stationary Cell flooded (OPzS) Box material: SAN transparent Lid material: ABS grey color Positive tubular and Negative flat plates Separators with low electric resistance Copper Connection (Cu) section: 3x30mm Standards: CEI EN 60896 Parte 11 EN 50272-2
Nominal Capacity (10 hours)		2000Ah (1,80Vfin) at 20°C		
Dimensions	Lenght	214 ±2mm		
	Width	399 ±2mm		
	Box Height	772 ±2mm		
	Total Height	849 ±2mm		
Technical Drawing n°4 00406-0		Weight 152,2 Kg ± 5%		
Screw Terminals: M10 female		Material: brass with protective treatment		



ELECTRIC FEATURES

Characteristics			Charging curves @ 20°C (77 °F)
Capacity	10 hours (1,80Vfin) 8 hours (1,75Vfin) 3 hours (1,70Vfin) 1 hour (1,65Vfin)	2000,0 Ah 1976,1 Ah 1564,2 Ah 1006,4 Ah	
Temperature influence on the capacity (10h)	40°C 20°C 0°C	102% 100% 85%	
Internal Resistance Ri: 0,17 mΩ ±10%		SCC I _{sc} : 12400 A ±10%	
Charging Voltage	Standby use	Max charging current 400A Floating Voltage 2,23V at 20°C Boosting Voltage 2,40V at 20°C Temperature Coefficient -20 mV/°C	

Discharge Table at constant Current (Amp) and constant Power (Watt/cell) at 20°C

Time		30min	60min	90min	2hours	3hours	5hours	8hours	10hours	100hours	120hours
1.65V	A	1258,60	1006,40	850,68	720,80	545,60	388,48	263,46	216,00	27,97	24,05
	W	2911,79	1927,80	1477,44	1248,00	936,54	652,54	466,10	378,00	49,05	41,62
1.70V	A	1117,31	904,40	783,36	674,56	521,40	374,42	257,79	214,00	27,44	23,28
	W	2776,36	1863,00	1425,60	1205,66	910,15	649,46	463,91	375,70	48,86	41,45
1.80V	A	812,00	680,00	612,00	544,00	440,02	327,00	236,50	200,00	26,38	22,38
	W	2257,20	1620,50	1296,00	1114,29	851,41	615,60	438,48	360,00	47,49	40,29