



FTS 6-1.2

PHYSICAL SPECIFICATION

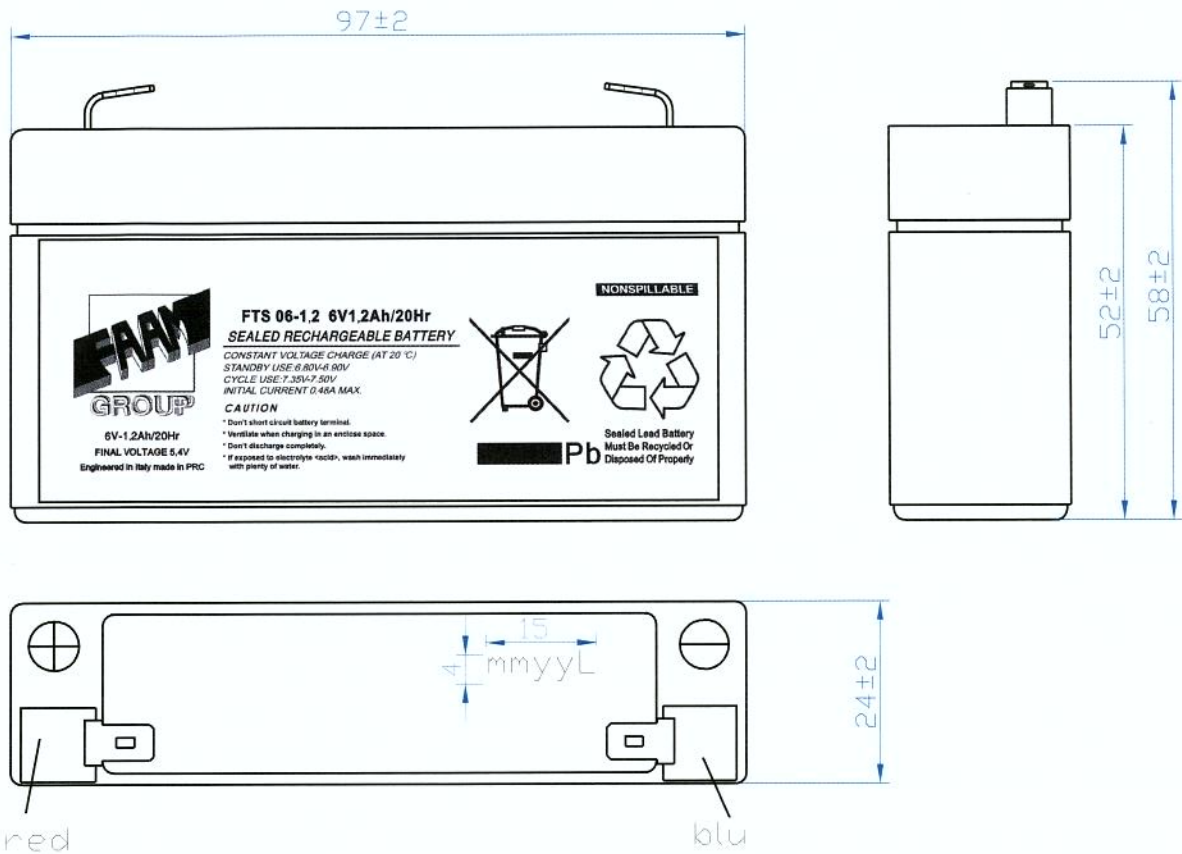
Nominal Voltage		6V
Nominal Capacity (20Hr)		1,2Ah
Dimension	Length	97 ±2mm
	Width	24 ±2mm
	Container Height	52 ±2mm
	Total Height	58 ±2mm
Drawing 400267-0		Weight 0.30 Kg ± 5%
Standard Terminal		Bolt Type: F1

ELECTRICAL SPECIFICATION

Characteristics			Discharge curves @ 25°C (77 °F)
Capacity	20 hour rate	1,20Ah	
	10 hour rate	1,00Ah	
	5 hour rate	0,95Ah	
	3 hour rate	0,87Ah	
	1 hour rate	0,81Ah	
Capacity affected by temperature	40°C	102%	
	20°C	100%	
	0°C	85%	
Internal Resistance 50 mΩ±10%			
Constant Voltage Charge	Cycle	Initial Charging Current less than 0,48A Voltage 7,35~7,50V at 20°C Temperature Coefficient -30 mV/°C	
	Standby	No limit on Initial Charging Current Voltage 6,8~6,9V at 20°C Temperature Coefficient -20 mV/°C	

Constant Current(Amp) and Constant Power (Watt/Cell) Discharge Table at 25°C

Time		5min	15min	30min	60min	90min	120min	180min	300min	480min	600min
4,95V	A	3,98	2,08	1,27	0,76	0,41	0,31	0,30	0,20	0,13	0,11
	W	6,57	3,43	2,09	1,25	0,68	0,51	0,40	0,33	0,21	0,18
5,10V	A	3,77	1,96	1,18	0,72	0,40	0,30	0,29	0,20	0,13	0,11
	W	6,23	3,23	1,95	1,19	0,66	0,49	0,39	0,32	0,20	0,18
5,40V	A	3,35	1,68	1,05	0,65	0,37	0,28	0,28	0,19	0,12	0,10
	W	5,52	2,77	1,73	1,07	0,61	0,47	0,37	0,31	0,20	0,17



colour of box and lid: green
 colour of silkscreen: white

date of production: mmyyL

| site of production
 | year of production
 | month of production

Box and lid FV0 on request
 Terminal type: FASTON F1

REV.	DATA/DATE	PROGETTISTA/DESIGNER	DISegnATO/DRAWN	APPROVATO/APPROVED	DESCRIZIONE MODIFICHE/DESCRIPTION REVISIONS
INDICAZIONI GENERALI/GENERAL INDICATIONS			MATERIALE/MATERIAL:	R (N/mm ²):	DUREZZA/HARDNESS:
GRADO DI PRECISIONE/DEGREE OF ACCURACY			ABS Pb/Ca		
NORMA UNI 6307/STANDARD UNI 6307			PROGETTO GENERALE-COMPLESSIVO/GENERAL PLAN-TOTAL PLAN:		PROGETTISTA/DESIGNER:
			BATTERIE STAZIONARIE/STATIONARY BATTERY		DISegnATO/DRAWN:
SOSTITUISCE IL/SUPERSEDES:		SOSTITUITO DAL/SUPERSEDS BY:	NOME FILE/NAME FILE:		APPROVATO/APPROVED:
			4 00267.dwg		F. PAGLIARINI
SCALA/SCALE:		FOGLIO/SHEET:	CODICE/CODe:	TIPO/TYPE:	VERSIONE/VERSION:
1:1		A4	FTS 6-1.2	Series VRLA AGM	CARICA/CHARGE
DENOMINAZIONE/PART DESCRIPTION:					DATA/DATE:
BATTERIA STAZIONARIA COD. FTS 6-1.2 6V 1.2Ah/20h / STATIONARY BATTERY CODE FTS 6-1.2 6V 1.2Ah/20h					26.01.2010
					DISeGNO N°-REV./ DRAWING N°-REV.:
					4 00267-0
					TAV.:
					1
		FAAM S.p.A. Via Monti,11 63026 Monterubbiano (AP) ITALY			
BATTERIE - VEICOLI ELETTRICI		Tel. ++39/07342581 Fax. ++39/0734258229 www.faam.com			
Questo disegno è di proprietà della FAAM e non può essere riprodotto o reso noto senza autorizzazione scritta. This drawing is a proprietary and shall not be reproduced or released to otherwise authorized by FAAM.					



6V-1,2Ah/20Hr
FINAL VOLTAGE 5,4V
Engineered in Italy made in PRC

FTS 06-1,2 6V1,2Ah/20Hr
SEALED RECHARGEABLE BATTERY

CONSTANT VOLTAGE CHARGE (AT 20 °C)
STANDBY USE: 6.80V-6.90V
CYCLE USE: 7.35V-7.50V
INITIAL CURRENT 0,48A MAX.

CAUTION

- * Don't short circuit battery terminal.
- * Ventilate when charging in an enclosed space.
- * Don't discharge completely.
- * If exposed to electrolyte <acid>, wash immediately with plenty of water.



NONSPILLABLE



Pb

Sealed Lead Battery
Must Be Recycled Or
Disposed Of Properly