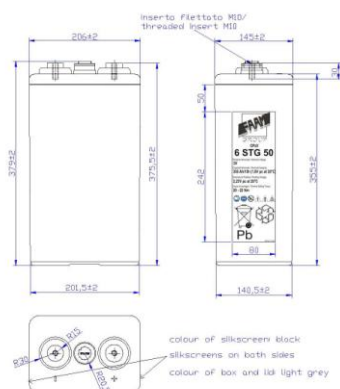
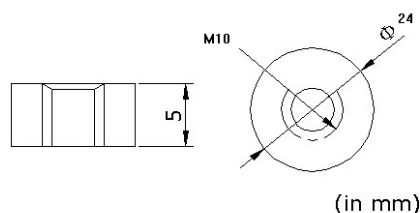
	<h1>6STG50</h1>
--	-----------------

## PHYSICAL SPECIFICATION

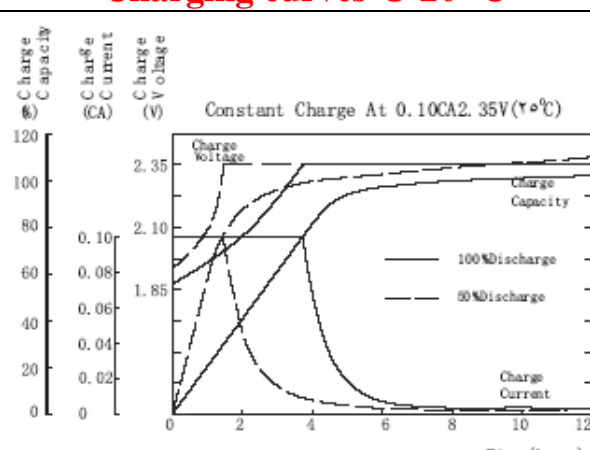
Nominal Voltage	2V	Container and lid ABS, FV0 on request
Nominal Capacity (10Hr)	300Ah	
Dimension	Length	206 ±2mm
	Width	145 ±2mm
	Container Height	355 ±2mm
	Total Height	379 ±2mm
Drawing 400303-0	Weight	28,0 Kg ± 5%
Standard Terminal	Bolt Type: M10	



Bolt-and-nut terminal  
Bolt Type: **M10**



## ELECTRICAL SPECIFICATION

Characteristics			Charging curves @ 20°C
Capacity	10 hour rate	300,00Ah	
	8 hour rate	279,76Ah	
	5 hour rate	242,85Ah	
	3 hour rate	231,69Ah	
	1hour rate	201,60Ah	
Capacity affected by temperature	40°C	102%	
	20°C	100%	
	0°C	85%	
Internal Resistance 0,7 mΩ±10%		SCC 3250 A ±10%	
Charge Voltage	Standby	Max Charge Current 60 A Floating Voltage 2,23V at 20°C Boost Charge 2,35V at 20°C Temperature Coefficient -20 mV/°C	

### Constant Current(Amp) and Constant Power (Watt/Cell) Discharge Table at 20°C

Time		30 min	60 min	90 min	2 h	3 h	5 h	8 h	10 h	100 h	120 h
1,65V	A	275,40	187,20	154,71	104,00	80,14	51,49	36,00	31,50	4,08	3,46
	W	501,97	374,45	303,44	236,02	179,49	117,53	80,24	66,15	8,60	7,30
1,70V	A	266,14	179,20	149,29	100,29	77,23	51,00	35,66	31,20	4,12	3,49
	W	484,80	358,44	292,79	227,59	172,96	116,42	79,48	65,52	8,68	7,37
1,80V	A	231,43	160,00	135,71	92,86	72,86	48,57	34,29	30,00	3,96	3,36
	W	429,03	320,04	266,18	210,74	163,17	110,88	76,42	63,00	8,35	7,09