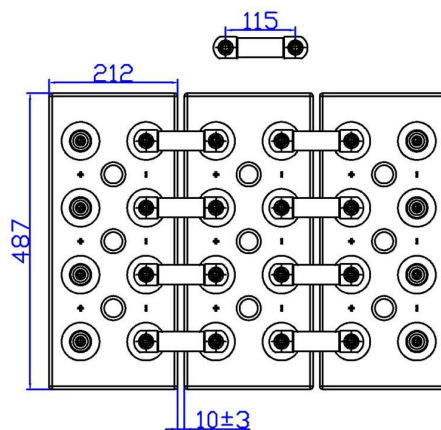
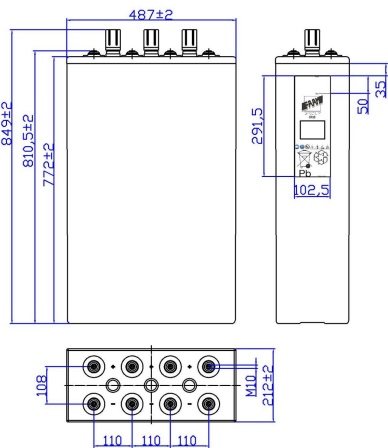




20STA125 – 20OPzS2500

DIMENSIONAL FEATURES

Nominal Voltage		2V		Stationary Cell flooded (OPzS) Box material: SAN transparent Lid material: ABS grey color Positive tubular and Negative flat plates Separators with low electric resistance Copper Connection (Cu) section: 3x30mm Standards: CEI EN 60896 Part 11 EN 50272-2
Nominal Capacity (10 hours)		2500Ah (1,80Vfin) at 20°C		
Dimensions	Lenght	212 ±2mm		
	Width	487 ±2mm		
	Box Height	772 ±2mm		
	Total Height	849 ±2mm		
Technical Drawing n°4 00407-0		Weight 188 Kg ± 5%		
Screw Terminals: M10 female		Material: brass with protective treatment		



ELECTRIC FEATURES

Characteristics			Charging curves @ 20°C (77 °F)	
Capacity	10 hours (1,80Vfin)	2500,0 Ah		
	8 hours (1,75Vfin)	2472,2 Ah		
	3 hours (1,70Vfin)	1955,3 Ah		
	1 hour (1,65Vfin)	1258,0 Ah		
Temperature influence on the capacity (10h)	40°C	102%		
	20°C	100%		
	0°C	85%		
Internal Resistance Ri: 0,14 mΩ ±10%		SCC I _{sc} : 14500 A ±10%		
Charging Voltage	Standby use	Max charging current 500A		
		Floating Voltage 2,23V at 20°C		
		Boosting Voltage 2,40V at 20°C		
		Temperature Coefficient -20 mV/°C		

Discharge Table at constant Current (Amp) and constant Power (Watt/cell) at 20°C

Time		30min	60min	90min	2hours	3hours	5hours	8hours	10hours	100hours	120hours
1.65V	A	1573,25	1258,00	1063,35	901,00	682,00	485,60	329,33	270,00	33,97	28,82
	W	3639,74	2409,75	1846,80	1560,00	1170,68	815,67	582,63	472,50	61,32	52,02
1.70V	A	1396,64	1130,50	979,20	843,20	651,75	468,02	322,23	267,50	34,30	29,10
	W	3470,45	2328,75	1782,00	1507,07	1137,68	811,82	579,89	469,62	61,08	51,82
1.80V	A	1015,00	850,00	765,00	680,00	550,00	408,75	295,63	250,00	32,98	27,98
	W	2821,50	2025,00	1620,00	1392,86	1064,25	769,50	548,10	450,00	59,36	50,36