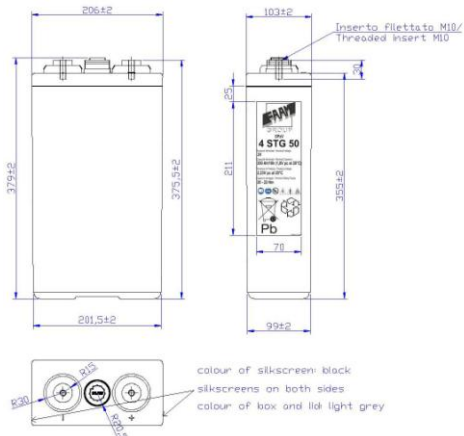
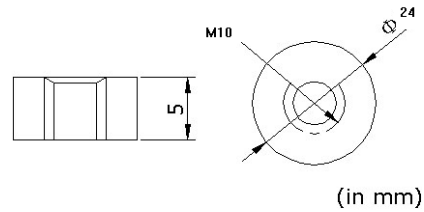
	<h1 style="margin: 0;">4STG50</h1>
--	------------------------------------

**PHYSICAL SPECIFICATION**

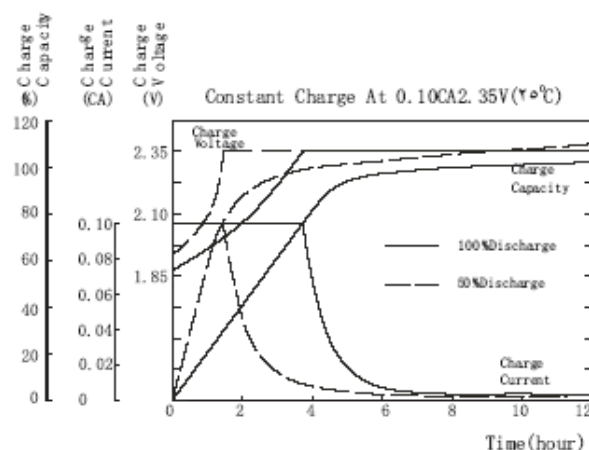
Nominal Voltage	2V	Container and lid ABS, FV0 on request
Nominal Capacity (10Hr)	200Ah	
Dimension	Length	206 ±2mm
	Width	103 ±2mm
	Container Height	355 ±2mm
	Total Height	379 ±2mm
Drawing 400301-0		Weight 19,0 Kg ± 5%
Standard Terminal		Bolt Type: M10



Bolt-and-nut terminal  
Bolt Type: **M10**



**ELECTRICAL SPECIFICATION**

Characteristics			Charging curves @ 20°C	
Capacity	10 hour rate	200,00Ah		
	8 hour rate	186,48Ah		
	5 hour rate	161,90Ah		
	3 hour rate	154,47Ah		
	1 hour rate	134,40Ah		
Capacity affected by temperature	40°C	102%		
	20°C	100%		
	0°C	85%		
Internal Resistance 0,8 mΩ±10%		SCC 2600 A ±10%		
Charge Voltage	Standby	Max Charge Current 50 A Floating Voltage 2,23V at 20°C Boost Charge 2,35V at 20°C Temperature Coefficient -20 mV/°C		

**Constant Current(Amp) and Constant Power (Watt/Cell) Discharge Table at 20°C**

Time		30 min	60 min	90 min	2 h	3 h	5 h	8 h	10 h	100 h	120 h
1,65V	A	183,60	124,80	103,14	69,33	53,43	34,32	24,00	21,00	2,72	2,31
	W	326,68	243,69	197,48	153,60	116,81	76,49	52,22	43,05	5,60	4,75
1,70V	A	177,43	119,47	99,52	66,86	51,49	34,00	23,77	20,80	2,74	2,33
	W	315,51	233,27	190,55	148,12	112,56	75,77	51,72	42,64	5,65	4,80
1,80V	A	154,29	106,67	90,48	61,90	48,57	32,38	22,86	20,00	2,64	2,24
	W	279,21	208,28	173,23	137,15	106,19	72,16	49,73	41,00	5,43	4,61