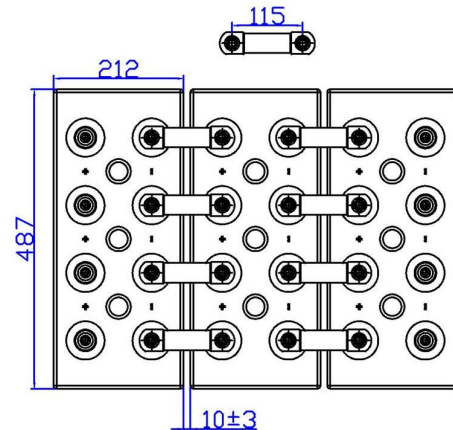
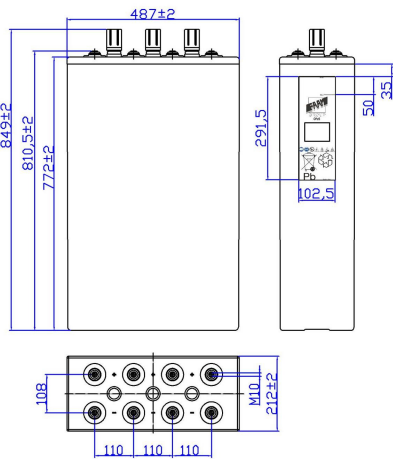




18STA125 – 18OPzS2250

DIMENSIONAL FEATURES

Nominal Voltage		2V		Stationary Cell flooded (OPzS) Box material: SAN transparent Lid material: ABS grey color Positive tubular and Negative flat plates Separators with low electric resistance Copper Connection (Cu) section: 3x30mm Standards: CEI EN 60896 Part 11 EN 50272-2
Nominal Capacity (10 hours)		2250Ah (1,80Vfin) at 20°C		
Dimensions	Lenght	212 ±2mm		
	Width	487 ±2mm		
	Box Height	772 ±2mm		
	Total Height	849 ±2mm		
Technical Drawing n°4 00407-0		Weight 179,6 Kg ± 5%		
Screw Terminals: M10 female		Material: brass with protective treatment		



ELECTRIC FEATURES

Characteristics			Charging curves @ 20°C (77 °F)	
Capacity	10 hours (1,80Vfin) 8 hours (1,75Vfin) 3 hours (1,70Vfin) 1 hour (1,65Vfin)	2250,0 Ah 2176,7 Ah 1759,7 Ah 1132,2 Ah		
Temperature influence on the capacity (10h)	40°C 20°C 0°C	102% 100% 85%		
Internal Resistance Ri: 0,15 mΩ ±10%		SCC I _{sc} : 13950 A ±10%		
Charging Voltage	Standby use	Max charging current 450A Floating Voltage 2,23V at 20°C Boosting Voltage 2,40V at 20°C Temperature Coefficient -20 mV/°C		

Discharge Table at constant Current (Amp) and constant Power (Watt/cell) at 20°C

Time		30min	60min	90min	2 hours	3 hours	5 hours	8 hours	10 hours	100 hours	120hours
1.65V	A	1415,93	1132,20	957,02	810,90	613,80	437,04	296,39	243,00	31,57	27,93
	W	3275,76	2168,78	1662,12	1404,00	1053,61	734,10	524,37	425,25	55,18	46,82
1.70V	A	1256,98	1017,45	881,28	758,88	586,58	421,22	290,01	240,75	30,87	26,19
	W	3123,40	2095,88	1603,80	1356,36	1023,91	730,64	521,90	422,66	54,97	46,64
1.80V	A	913,50	765,00	688,50	612,00	495,00	367,88	266,06	225,00	29,68	25,18
	W	2539,35	1822,50	1458,00	1253,57	957,83	692,55	493,29	405,00	53,42	45,32